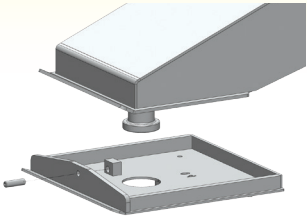




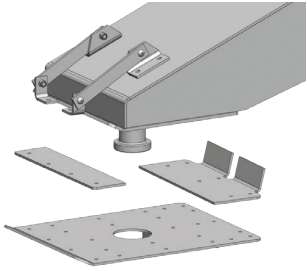
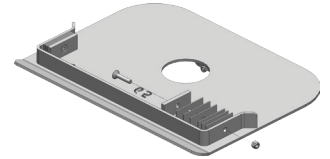
CAPTURE PLATE OPTIONS

(REQUIRED FOR ALL SUPERGLIDE HITCH FUNCTIONALITY)

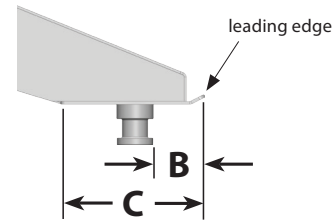
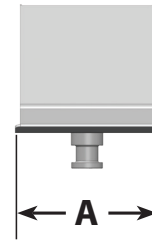


QuickConnect Capture Plates are designed to work with popular king pin box models—simplifying and significantly reducing installation times. Most QuickConnect applications slip over the king pin and are held in place by a set screw and nylon spacer, holding it onto the king pin box. When the trailer is hooked up to the hitch, the Capture Plate's wedge isolates the king pin from turning in the fifth wheel plate, causing the Cam Assembly to activate and allowing the SuperGlide to move as turns are being made. To identify the correct Capture Plate for a specific king pin box on the trailer, use the chart below.

Multi Fit QuickConnect Plates are designed to offer even more flexibility and will fit a much wider selection of king pin boxes by using a design that accommodates all "C" measurements (length of the king pin box front-to-back). Simply confirm your trailer's "A" and "B" measurements to make certain the Multi Fit is the Capture Plate for you.



Universal Capture Plates can be used for most trailers. Relatively simple, but can be time consuming to install. In cases where the fore-to-aft dimension of the king pin box is very short, extension plates (must be welded to your trailer's king pin plate) and knee braces are added to support the Capture Plate. QuickConnect Plates are much quicker, and easier to install.



5.20.14



QuickConnect Capture Plate Sizing Chart			Measurement A	Measurement B	Measurement C
King Pin Box Manufacturer	MFR#	King Pin Box Model #	CAUTION: Measurement cannot be smaller than noted below. (see above diagram)	TIP: Use straight edge when measuring to the leading edge of pin box. (see above)	TIP: Use straight edge when measuring to the leading edge of pin box. (see above)
5th Airborne (medium)	331709	Most Models	10-1/2"	6-7/8"	14-1/4"
5th Airborne	331759	Most Models	12"	7-7/8"	19-7/8"
Demco (Universal will not work)	331750	Most Models	10-3/4"	5"	11-7/8"
Demco (Universal will not work)	331751	Most Models	11-1/4"	5-1/8"	12-1/16"
Dexter	331731	Most Models	12"	5-9/16"	12-1/4"
Fabex	331720	500's, 765, 770*	13-1/2"	3-1/4"	9-1/4"
Fabex	331706	Most Models	12"	4-5/8"	11-3/8"
Leland	331730	Most Models	14"	5-1/2"	12-1/4"
Lippert (long)	331704	1621*	12-3/4"	3-3/8"	8-7/8"
Lippert (long)	331711	1621 HD*	12-3/4"	4"	8-7/8"
Lippert (long)	331705	1621*	13-1/4"	3-3/8"	8-7/8"
Lippert (medium)	331705	1116*	13-1/4"	3-1/2"	9-3/16"
Lippert (long)	331705	1716*	13-1/4"	3-1/4"	8-7/8"
Lippert	331710	0719**	12-3/4"	6-3/8"	12-1/4"
MOR/ryde (don't use Universal or Multi-fit)	331707	Rubber Cushion	13-1/2"	7-5/16"	17-1/2"
Trailair Rota-Flex (don't use Universal or Multi-fit)	331756	160468 & 176440	13-3/8"	5-3/8"	11-7/16"
Trailair Rota-Flex (don't use Universal or Multi-fit)	331760	328329	13-5/8"	5"	11-7/16"
Trailair Tri Glide	331757	Tri Glide Only	12-3/4"	5-15/16"	ALL
Trailair Airbag/Shock Pin Box	331758	Most Models	13-3/8"	7-3/8"	13-1/2"

Multi-fit QuickConnect Capture Plate

Multi-fit Capture Plate	3365	* Fits the indicated pin boxes above	12-3/4" through 13-1/2" and 14"	2-9/16"-4"	ALL
Multi-fit Capture Plate	3366	** Fits the indicated pin boxes above	12, 12-1/4", 12-3/4"	5-3/16"-6-5/8"	ALL

Universal Capture Plate

Universal Capture Plate Kit	3317	INCLUDES: Universal Capture Plate, Fore & Aft Plate Extensions, Knee Braces, & Hardware			
-----------------------------	------	---	--	--	--